



Cloud Management System

gdms.cloud

The Grandstream Device Management System (GDMS) is a zero-touch cloud provisioning and management system that provides easy-to-use enterprise-level tools to manage Grandstream products before, during and after deployment. It provides a centralized interface to provision, manage, monitor and troubleshoot Grandstream products, including device management, account management, device configuration, firmware upgrades, device monitoring, intelligent alarm, and statistical analysis, individually or in batches of devices by site, group and model. This powerful cloud management platform adds robust security features to protect enterprise networks, including bank-grade TLS encryption from end-to-end, two-way certificate verification and encryption of all device information. By offering a centralized, secure and zero-touch management for Grandstream endpoints, GDMS is ideal for enterprises, service providers and multi-site businesses as it allows them to easily deploy and manage large networks of Grandstream solutions. Visit gdms.cloud to sign up.



Offers configuration, management and monitoring of devices, accounts and firmware



Real-time device and network monitoring; analytical system reports



Configure and manage a batch of devices by different sites, groups and models



Enterprise-grade security including TLS and 2-way certificate verification



Configurable notifications, intelligent alarms and automatic troubleshooting



Intelligent troubleshooting automatically identifies problems and provides diagnostic reports

Function

Device management, Account management, Device configuration, Firmware upgrade, Device monitoring, Intelligent alarm, Statistical analysis, Channel management, and Task management

Security and Authentication

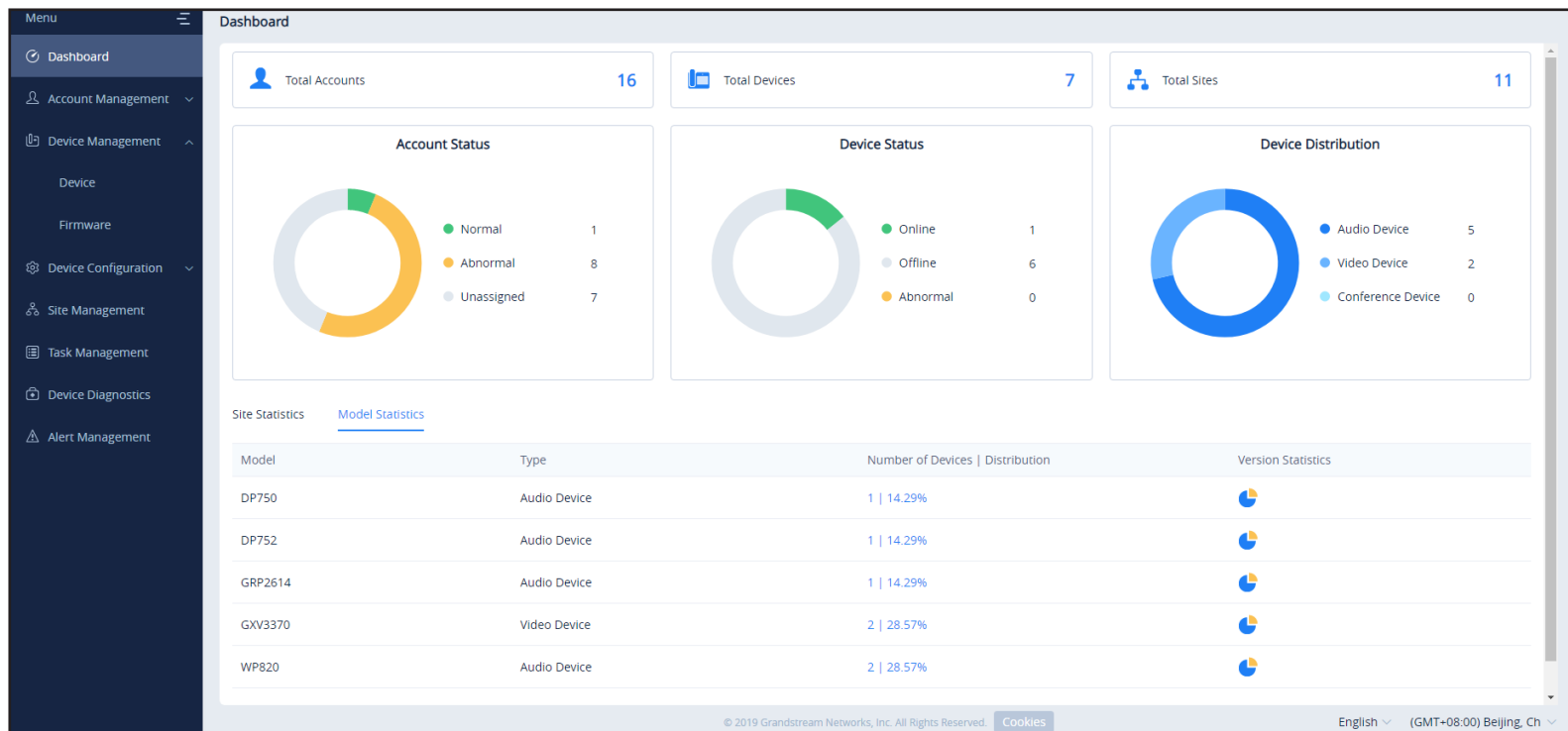
- Bank-grade TLS encryption from end-to-end to ensure data security
- Two-way certificate verification mechanism between devices and GDMS in order to ensure the security of the GDMS platform and devices
- Device information is encrypted and stored so that it cannot be obtained from the data storage
- The account password is encrypted and stored with sha256 algorithm to ensure the security of the account
- With SN and MAC address authentication of the devices, users associate the devices with the GDMS platform to ensure the private rights of the devices
- The privileges of the sub-users can be managed on the GDMS platform

Enterprise Features

- Configures all parameters of the devices, including Account settings, Phone settings, Network settings, System settings, Maintenance, Applications, Profiles, Handset, etc.
- Manage all sites, all group templates and all model templates.

Supported Models

Grandstream models currently supported: GRP / DP / WP / GXV series
Support pending: GXP/ GVC / GWN / UCM / HT / GXW series.



GDMS User Interface